

Thermalized® Skydome® Product Data

Curb-Mount (SS2)

Wasco curb-mount Thermalized® Solar-Energy Skydomes® offer outstanding lighting and thermal performance in a versatile range of dome or pyramid styles.

- Curb mount for use on 1½" thick site-built or prefabricated curbs
- Available in standard and custom sizes, domed or pyramid shapes
- Safety screens recommended

Performance

IBC Section 2405.5 Unit Skylight Compliance:

North American Fenestration Standard: (NAFS)

AAMA/WDMA/CSA 101/I.S.2/A440

Air infiltration: Air infiltration: <0.01 cfm/ft² @ 6.27 psf per ASTM E283

Water Penetration: 15 psf per ASTM E547

Design Pressure: Varies with size, minimum DP30

IBC Section 2606.4 Light Transmitting Plastics:

Dome Acrylic Glazings:

Self-Ignition Temperature	ASTM D-1929	750 deg. F
Smoke Density	ASTM D 2843	3.8
Combustibility Classification	ASTM D-635	CC2

Performance:

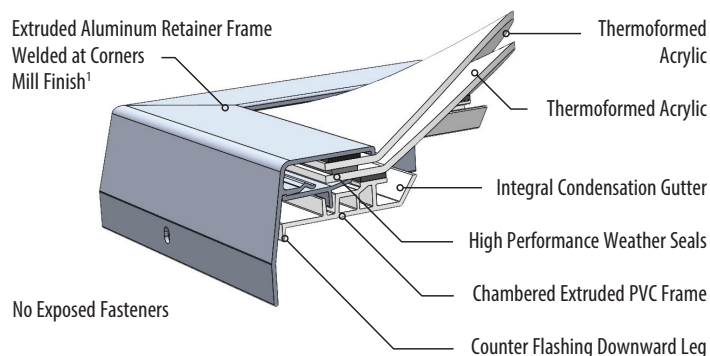
Acrylic	LT	SHGC	U-Value	R-Value	Haze
Clear	92%	0.84	1.20	0.83	0%
White 2447	54%	0.64	1.20	0.83	100%
Bronze 2412	27%	0.50	1.20	0.83	0%
Clear/Clear	85%	0.77	0.61	1.64	0%
Clear/2447 White	50%	0.52	0.61	1.64	100%
2447 White/2447 White	29%	0.41	0.61	1.64	100%
2412 Bronze/Clear	25%	0.37	0.61	1.64	0%
2412 Bronze/2447 White	14%	0.32	0.61	1.64	100%
SatinSky2/Clear/Clear*	49%	0.37	0.46	2.17	97%

*NFRC Certified

SAFETY CONSIDERATIONS



Skylights pose an inherent risk of injury or death from fall throughs, and the safety of others is of the utmost importance to VELUX. VELUX recommends that the customer, building owner or manager use additional protection with the skylight such as an exterior or interior safety cage, to enhance long-term safety. The building owner or manager is responsible for providing fall protection around the skylight in accordance with OSHA regulations. VELUX also recommends that the building owner or manager restrict roof access only to personnel who have been cautioned as to the location of the skylights, and warned not to sit, step or walk on the skylights.



Standard Info

Finishing:

Frame: White PVC

Retainer: Mill. ¹Other finishes available, contact factory for information.

Glazing:

Double: Acrylic outer dome over acrylic inner dome.

Triple: Acrylic outer dome over two acrylic inner domes.

Standard Sizes (Custom Sizes Available)

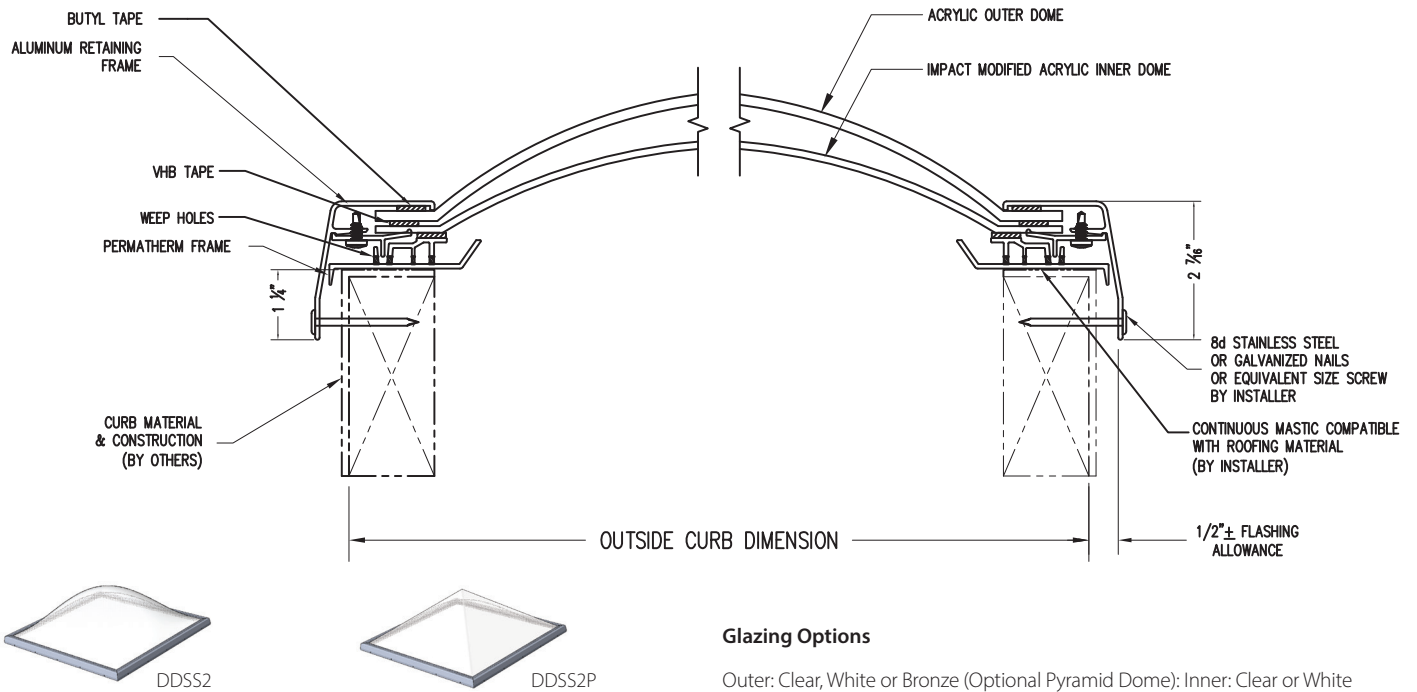
CURB MOUNT (SS2) DOUBLE OR TRIPLE DOME

Available Options: P = Pyramid Outer Dome

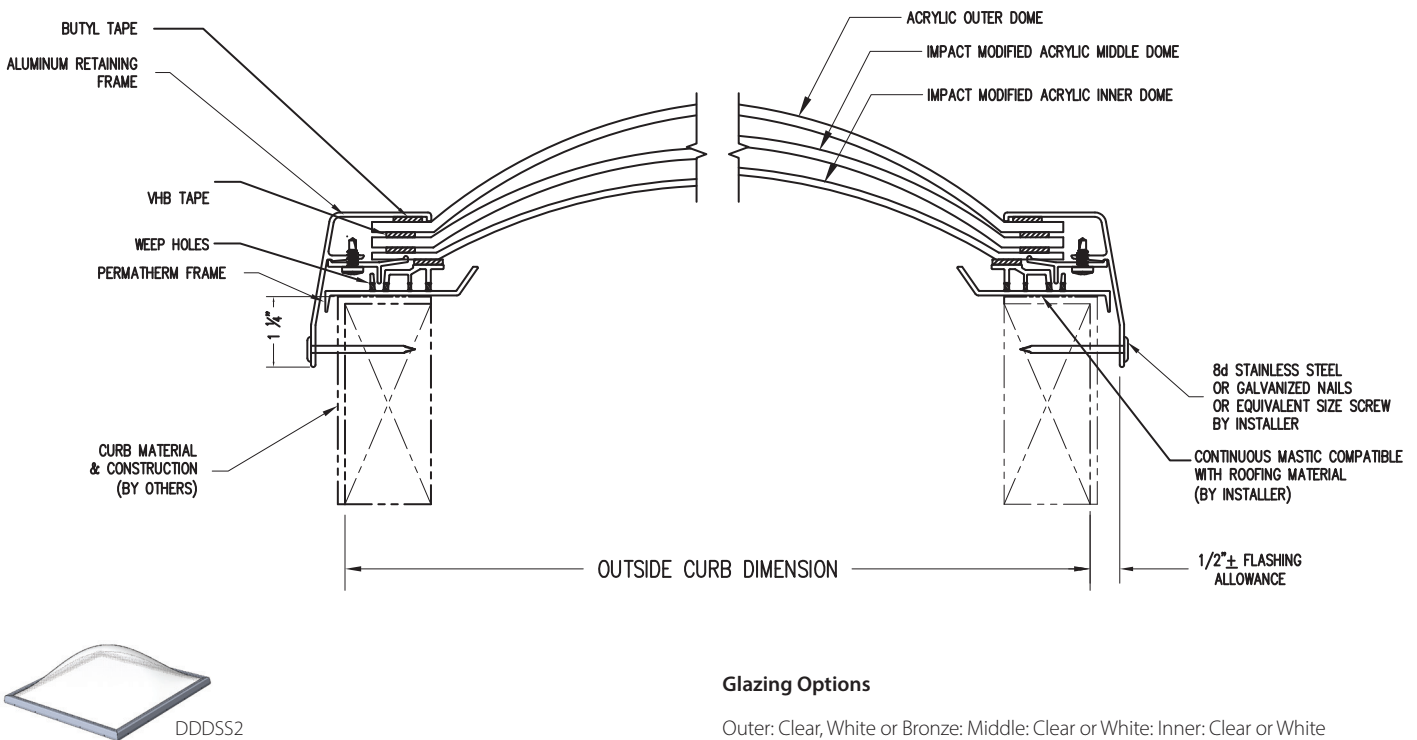
Double Dome Model	Triple Dome Model	O.D. Curb
DDSS[P]2-2828	DDDSS2-2828	25 ¼" x 25 ¼"
DDSS[P]2-2852	DDDSS2-2852	25 ¼" x 49 ¼"
DDSS[P]2-3636	DDDSS2-3636	33 ¼" x 33 ¼"
DDSS[P]2-3652	DDDSS2-3652	33 ¼" x 49 ¼"
DDSS[P]2-4242	DDDSS2-4242	40" x 40"
DDSS[P]2-5252	DDDSS2-5252	49 ¼" x 49 ¼"
DDSS[P]2-5276	DDDSS2-5276	49 ¼" x 72 ½"
DDSS[P]2-5296	DDDSS2-5296	49 ¼" x 92 ½"
DDSS[P]2-5555	DDDSS2-5555	51" x 51"
DDSS[P]2-55102	DDDSS2-55102	51" x 99"
DDSS[P]2-6060	DDDSS2-6060	58" x 58"
DDSS[P]2-6476	DDDSS2-6476	60 ½" x 72 ½"
DDSS[P]2-6496	DDDSS2-6496	60 ½" x 92 ½"
DDSS[P]2-6666	DDDSS2-6666	63" x 63"
DDSS[P]2-66102	DDDSS2-66102	63" x 99"
DDSS[P]2-7272	DDDSS2-7272	71" x 71"
DDSS[P]2-8080	DDDSS2-8080	78" x 78"
DDSS[P]2-9898	DDDSS2-9898	95 ½" x 95 ½"

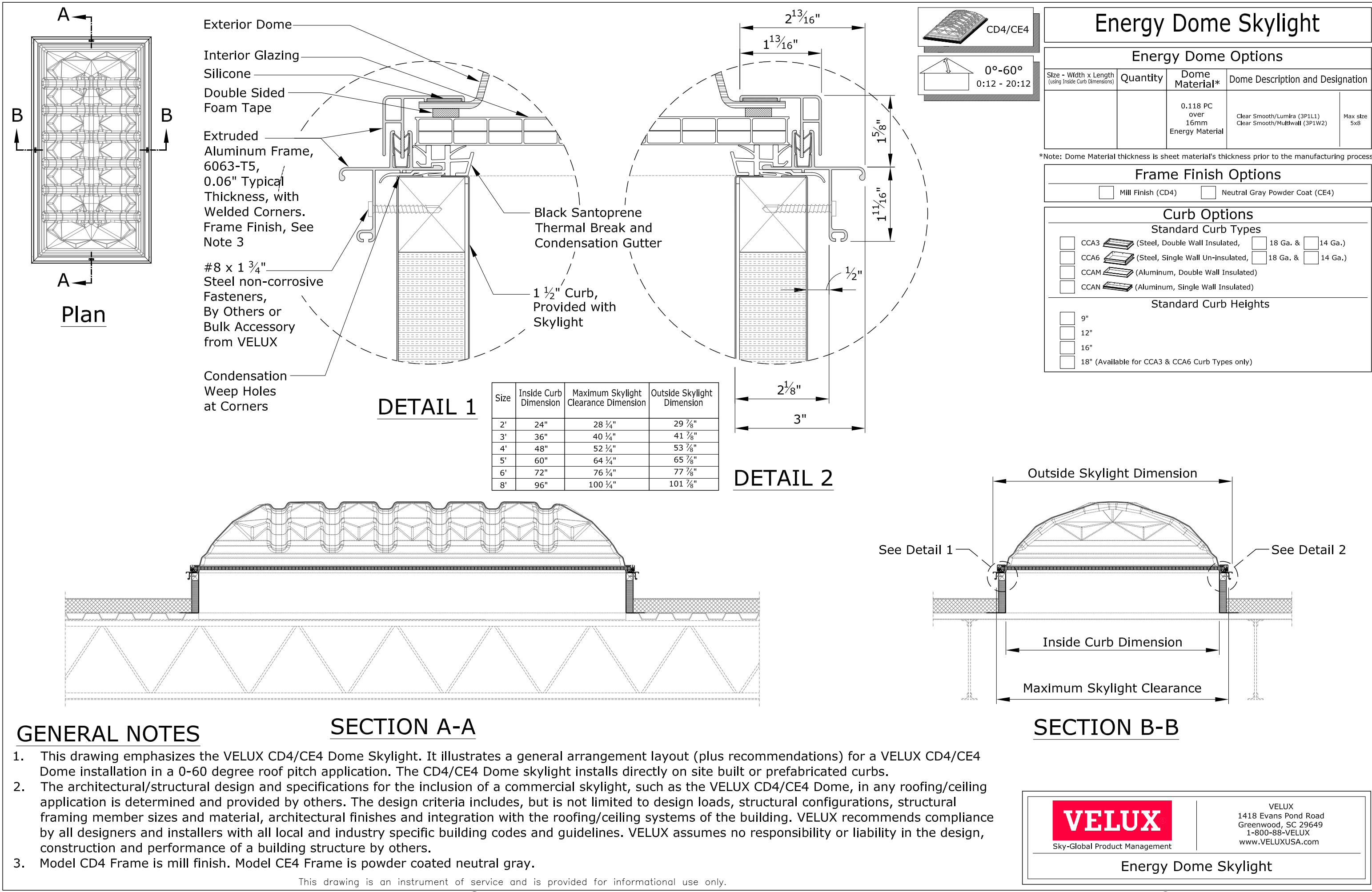
Thermalized® Skydome® Product Data

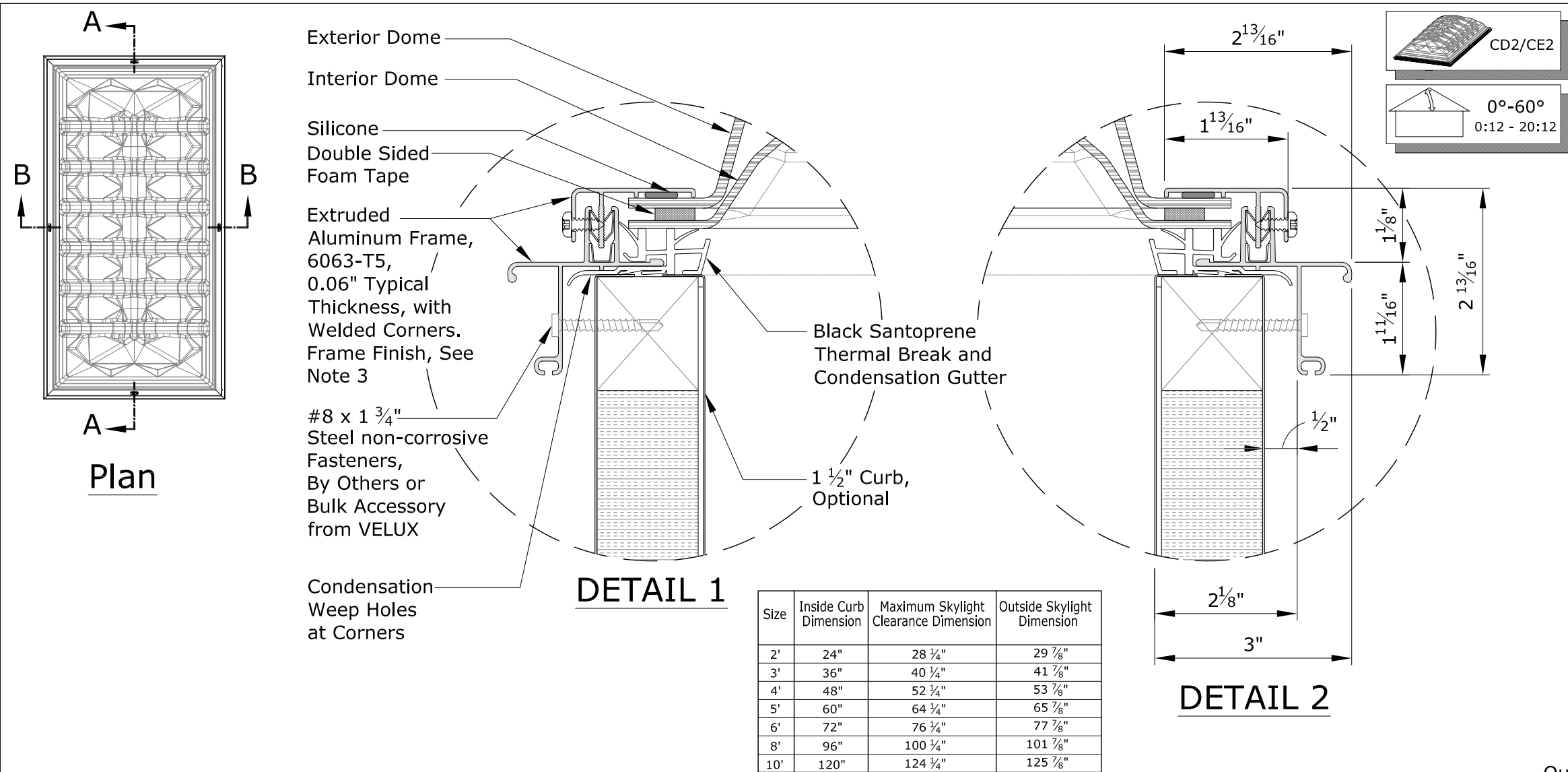
DDSS2 – Double Dome Curb Mount



DDDSS2 – Triple Dome Curb Mount







Dynamic Double Dome Skylight

Dynamic Double Dome Options

Size - Width x Length (using Inside Curb Dimensions)	Quantity	Dome Material*	Dome Description and Designation	
		IMA 0.150 100% IMA over 0.118 50% IMA	Clear Smooth / Prismatic White (1S1N2) Clear Smooth / White Smooth (1S1T2)	6x6 size only
		LuxGuard Plus 0.150 PC over 0.118 PC	Clear Smooth / White Prismatic (2P1C2) Clear Smooth / Clear Prismatic (2P1C1) White Smooth / Clear Prismatic (2P2C1) Clear / White Smooth (2P1P2) White Smooth / Clear Smooth (2P2P1)	Max size 5x10 6x6 size only
		LuxGuard 0.118 PC over 0.118 PC	Clear Smooth / White Prismatic (3P1C2) Clear Smooth / Clear Prismatic (3P1C1) White Smooth / Clear Prismatic (3P2C1) Clear / White Smooth (3P1P2) White Smooth / Clear Smooth (3P2P1)	Max size 5x10 All sizes
		Infrared 0.118 EcoShade over 0.118 PC	EcoShade / Prismatic Clear (3I2C1) EcoShade / Clear Smooth (3I2P1)	Max size 5x10 6x6 size only





*Note: Dome Material thickness is sheet material's thickness prior to the manufacturing process.

Frame Finish Options

- ☐ Mill Finish (CD2) ☐ Neutral Gray Powder Coat (CE2)

Curb Options

Standard Curb Types

- ☐ CCA3  (Steel, Double Wall Insulated, ☐ 18 Ga. & ☐ 14 Ga.)
☐ CCA6  (Steel, Single Wall Un-insulated, ☐ 18 Ga. & ☐ 14 Ga.)
☐ CCAM  (Aluminum, Double Wall Insulated)
☐ CCAN  (Aluminum, Single Wall Insulated)

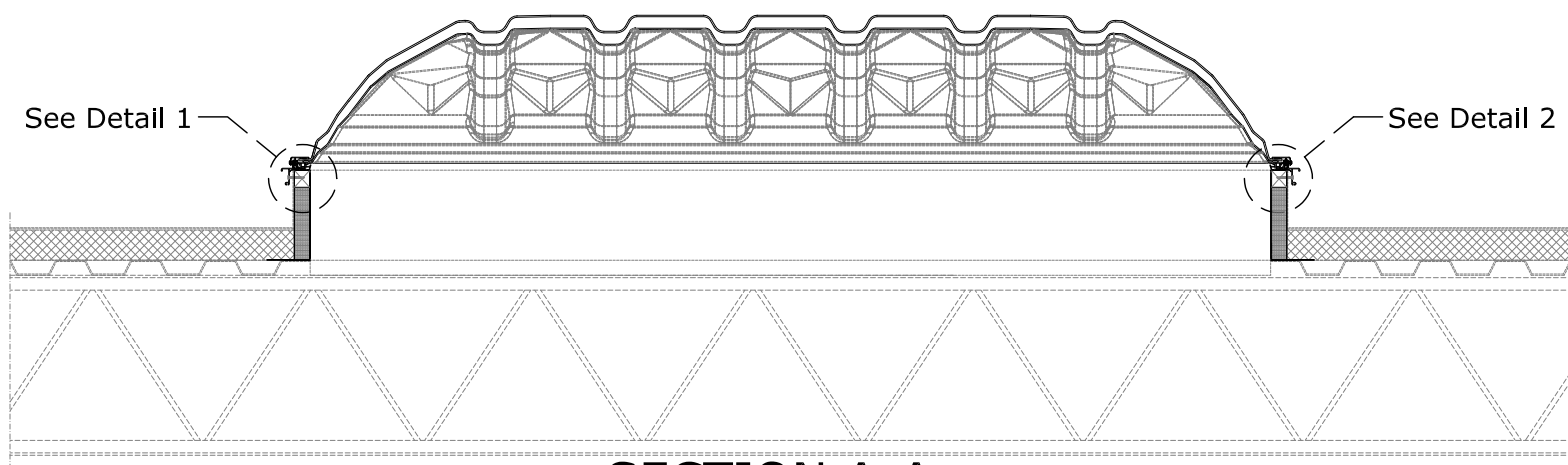
Standard Curb Heights

- ☐ 9"
☐ 12"
☐ 16"
☐ 18" (Available for CCA3 & CCA6 Curb Types only)

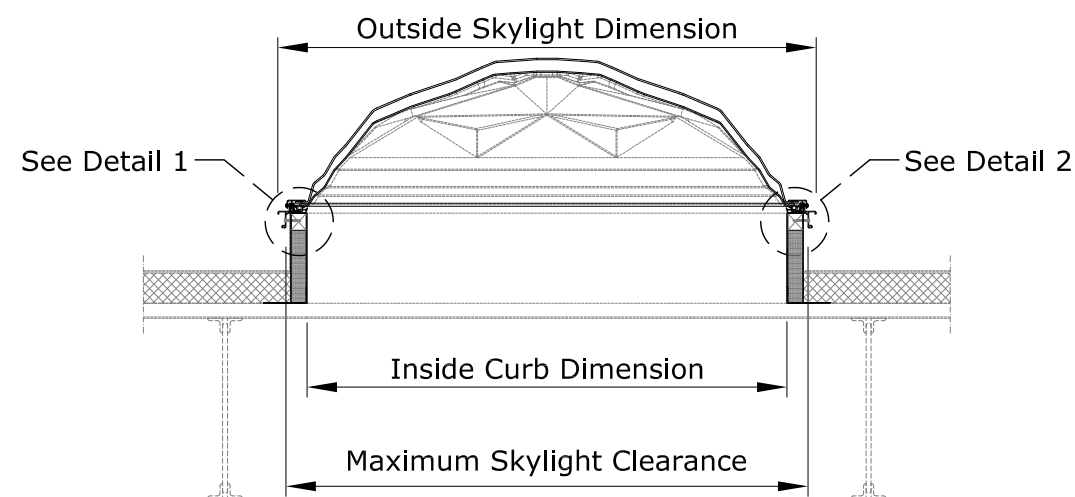
GENERAL NOTES

1. This drawing emphasizes the VELUX CD2/CE2 Dynamic Dome Skylight. It illustrates a general arrangement layout (plus recommendations) for a VELUX CD2/CE2 installation in a 0-60 degree roof pitch application. The CD2/CE2 skylight installs directly on site built or prefabricated curbs.
2. The architectural/structural design and specifications for the inclusion of a commercial skylight, such as the VELUX CD2/CE2, in any roofing/ceiling application is determined and provided by others. The design criteria includes, but is not limited to design loads, structural configurations, structural framing member sizes and material, architectural finishes and integration with the roofing/ceiling systems of the building. VELUX recommends compliance by all designers and installers with all local and industry specific building codes and guidelines. VELUX assumes no responsibility or liability in the design, construction and performance of a building structure by others.
3. Model CD2 Frame is mill finish. Model CE2 Frame is powder coated neutral gray.

SECTION A-A



SECTION B-B



This drawing is an instrument of service and is provided for informational use only.

© 2018 VELUX GROUP

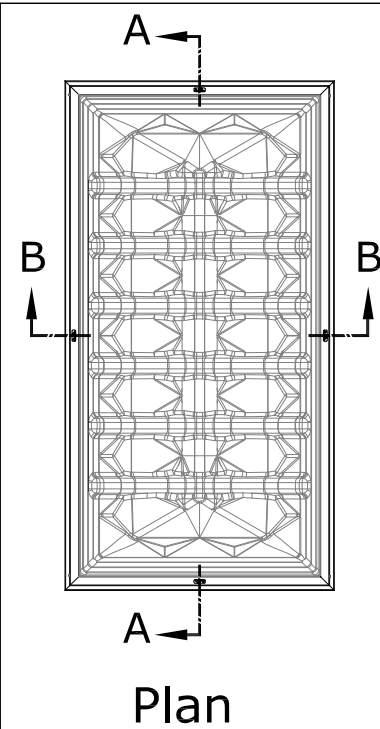
® VELUX is a registered trademark

VELUX

Sky-Global Product Management

VELUX
1418 Evans Pond Road
Greenwood, SC 29649
1-800-88-VELUX
www.VELUXUSA.com

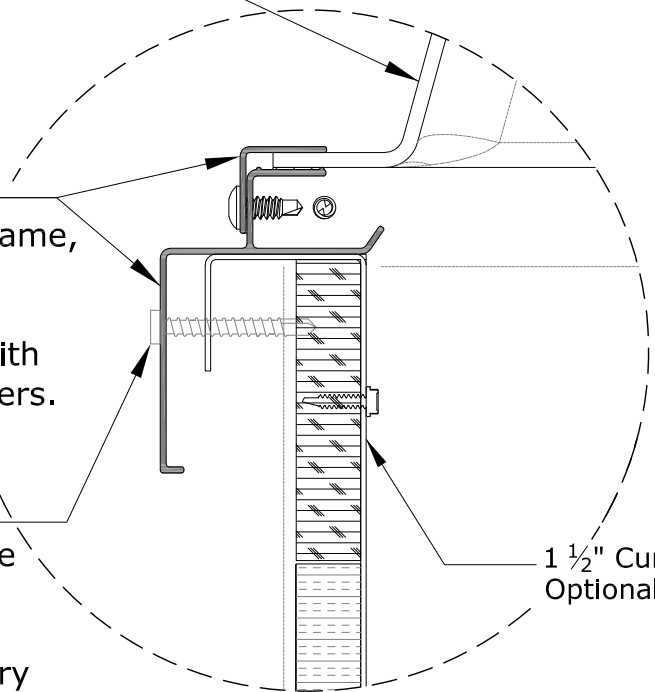
Dynamic Double Dome Skylight



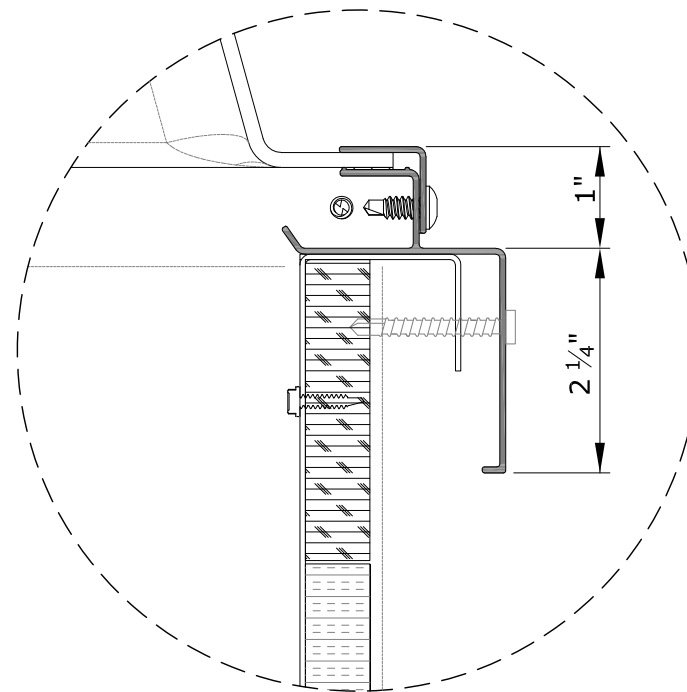
Single Dome
0.118" LuxGuard
White Polycarbonate

Extruded
Aluminum Frame,
6063-T5,
0.06" Typical
Thickness, with
Welded Corners.
Mill Finish

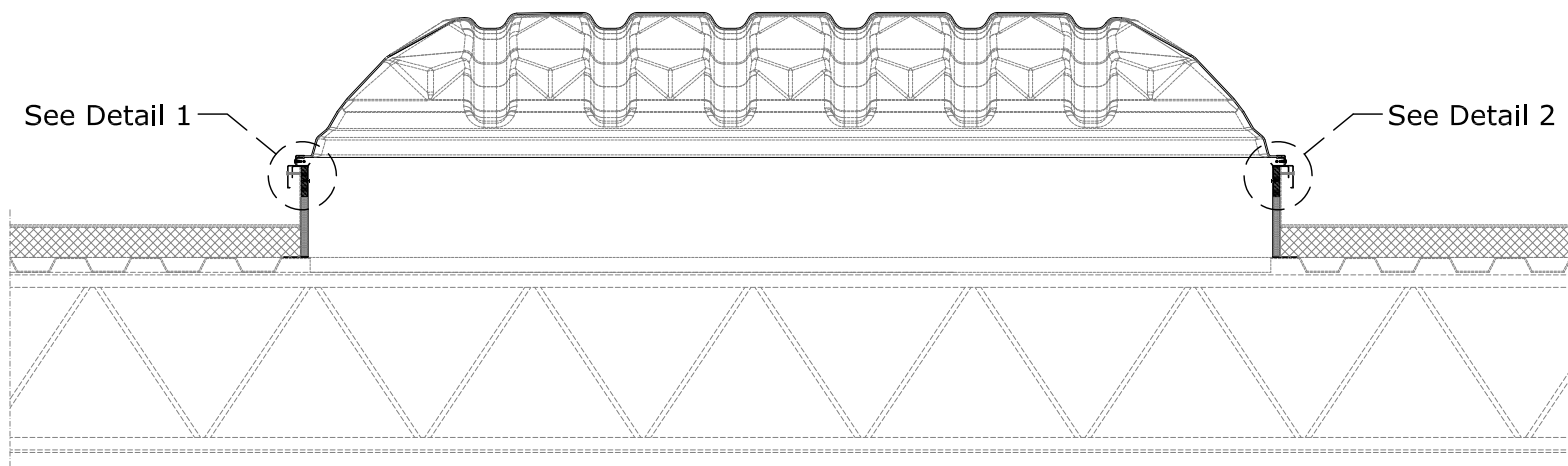
#8 x 1 3/4"
Non Corrosive
Fasteners,
By Others or
Bulk Accessory
from VELUX



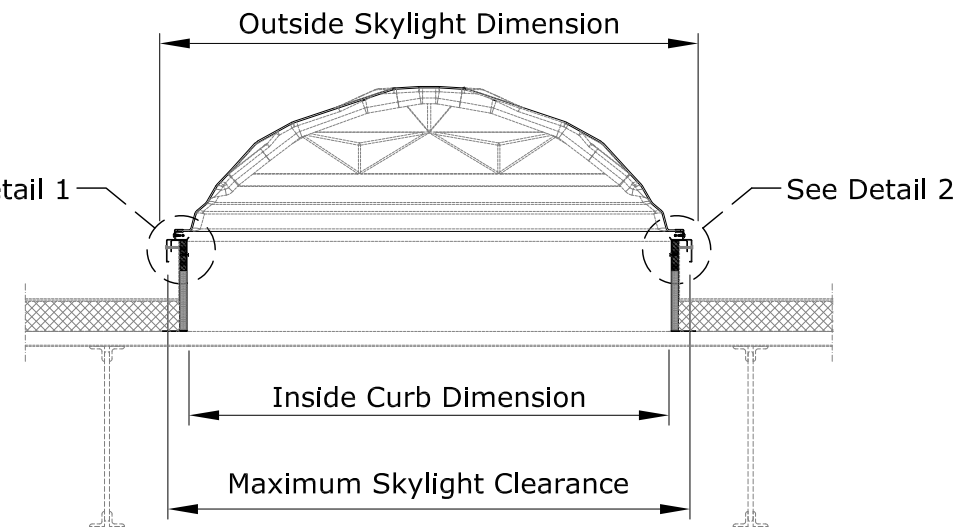
DETAIL 1



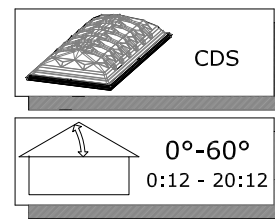
DETAIL 2



SECTION A-A



SECTION B-B



CDS Dome Skylight

CDS Dome Sizes

Size - Width x Length (Using Inside Curb Dimensions)	Quantity	Inside Curb Dimension	Maximum Skylight Clearance Dimension	Outside Skylight Dimension
4x4		48"x48"	52 1/4" x 52 1/4"	53 7/8" x 53 7/8"
4x8		48"x96"	52 1/4" x 100 1/4"	53 7/8" x 101 7/8"

Curb Options

Standard Curb Types

- ☐ CCA3 (Steel, Double Wall Insulated, ☐ 18 Ga. & ☐ 14 Ga.)
- ☐ CCA6 (Steel, Single Wall Un-Insulated, ☐ 18 Ga. & ☐ 14 Ga.)
- ☐ CCAM (Aluminum, Double Wall Insulated)
- ☐ CCAN (Aluminum, Single Wall Insulated)

Standard Curb Heights

- ☐ 9"
- ☐ 12"
- ☐ 16"
- ☐ 18" (Available for CCA3 & CCA6 Curb Types only)

GENERAL NOTES

1. This drawing emphasizes the VELUX CDS Dynamic Dome Skylight. It illustrates a general arrangement layout (plus recommendations) for a VELUX CDS installation in a 0-60 degree roof pitch application. The CDS skylight installs directly on site built or prefabricated curbs.
2. The architectural/structural design and specifications for the inclusion of a commercial skylight, such as the VELUX CDS, in any roofing/ceiling application is determined and provided by others. The design criteria includes, but is not limited to design loads, structural configurations, structural framing member sizes and material, architectural finishes and integration with the roofing/ceiling systems of the building. VELUX recommends compliance by all designers and installers with all local and industry specific building codes and guidelines. VELUX assumes no responsibility or liability in the design, construction and performance of a building structure by others.
3. Model CDS Frame is mill finish.

This drawing is an instrument of service and is provided for informational use only.

© 2018 VELUX GROUP



VELUX
1418 Evans Pond Road
Greenwood, SC 29649
1-800-88-VELUX
www.VELUXUSA.com

CDS Dome Skylight

® VELUX is a registered trademark