

BT-PRIMER and PROTECTO-TAK SPRAY ADHESIVE DATA SHEET

DESCRIPTION:

BT-Primer and Protecto-Tak Spray Adhesive are high tack primers for use under the BT-Series products over Dens-Glass Gold*, all OSB board, black sheathing board, metal, wood, dry concrete and dry masonry. When used over Dens-Glass Gold*, BT-Primer is moisture tolerant and is suitable for use on moist or damp Dens-Glass Gold*. BT-Primer and Protecto-Tak Spray Adhesive are VOC compliant.

PROPERTIES:

	BT-Primer	Protecto-Tak Spray Adhesive
Adhesion to wood	Excellent	Excellent
Adhesion to steel	Excellent	Excellent
Adhesion to dry concrete	Excellent	Excellent
Adhesion to dry masonry	Excellent	Excellent
Adhesion to membrane	Excellent	Excellent
Coverage	150 sq. ft./gal.	2 oz: 4" x 100' roll
Shelf life (min.)	One Year	One Year
Tack free time (minutes)	20-45 minutes	2-10 minutes
Flash Point	24°F TCC	-42°F TCC

DIRECTIONS FOR USE:

PREPARATION:

BEFORE HANDLING read material safety data sheets for health information.

- The surface shall be cleaned so that all dirt, dust, loose concrete, or other contaminants that may adversely affect the adhesion of the membrane are removed.

BT-PRIMER APPLICATION:

- Apply primer to all surfaces by roller or brush.
- Primed surface shall be free of runs, puddles or excessive primer as this could cause blistering. Brush or roll out all primer puddles or drips immediately.
- Prime only as much area as can be covered in half a day's work. Re-prime areas not covered in half a day's work with a light coat of BT-Primer.
- Tack free time is approximately 20 to 45 minutes.

NOTE: Some bubbling in the primer may occur on the surface as it cures. This has no effect on the performance of the product and will smooth out as the membranes are applied.

PROTECTO-TAK SPRAY ADHESIVE APPLICATION:

- Shake can before using.
- Turn spray tip so arrow points to dot on rim.
- Hold can 6 inches from surface to be sprayed and apply to surface.
- After each use, invert container and spray until nozzle clears. Clean clogged spray tips with hot water.
- Clean oversprayed areas with a mix of 25% - 30% water added to isopropyl alcohol.

PACKAGING AND WEIGHTS:

BT-PRIMER

QUANTITY	PACKAGING
1 Gallon	4 gallons/carton
5 Gallon pail	1 pail

PROTECTO-TAK SPRAY ADHESIVE

QUANTITY	PACKAGING
13 oz can	12 cans/carton

**Dens-Glass is a registered trademark of Georgia-Pacific Corporation*

BT25XL 01 06/07



Premium Building Products
That Protect

1955 South Cherokee St., Denver, Colorado 80223
(303) 777-3001 • Fax (303) 777-9273 • 1-800-759-9727
www.protectowrap.com



Premium Building Products
That Protect

BT25XL Butyl Hybrid Window & Door Sealing Tape



Forms a permanent waterproofing air/vapor seal around doors and windows that prevents air and moisture leaks.



- Stop moisture intrusion that causes black mold
- No special tools needed, peel and stick installation
- Meets or exceeds all building codes including ASTM 2112
- Meets or exceeds ICC Code Approval ESR1825
- The only flashing tape that passed hurricane level windblown rain test ASTM E331-90
- Adheres to vinyl, plywood, OSB, foam, metal, aluminum, and masonry
- Can be left exposed up to 120 days



PROTECTO WRAP BT25XL BUTYL HYBRID WINDOW & DOOR SEALING TAPE can help reduce air infiltration as recommended by the ENERGY STAR HOME SEALING guidelines.

Protecto Wrap's building tape **BT25XL** is a tough-faced superior self-adhering, air/vapor barrier and waterproofing membrane for vertical and horizontal above grade substrates. **BT25XL** seals window perimeters to building substrates to create an impenetrable barrier. This 25-mil polyethylene-backed aggressive rubberized adhesive membrane can be applied to vinyl, plywood, OSB, concrete, metal, aluminum, polyethylene, building wrap products, block and masonry surfaces to form an air/vapor moisture barrier system. **BT25XL is the only window sealing tape that can be installed and left exposed for 120 days without UV degradation.**

EASE OF INSTALLATION

Since BT25XL is a peel and stick self-adhering membrane, you simply center the tape over the area to be sealed and firmly roll the BT25XL against the surface. BT25XL also seals itself around nails, screws and staples.

ENERGY EFFICIENT

Not only will BT25XL waterproof around doors and windows, it stops air leakage, thus reducing heating and air conditioning costs to the homeowner.

Using this field tested product will prove that you are a builder who cares about providing the highest quality building materials to your customers.

Protecto Wrap's BT25XL is suitable for sealing the following applications:

- Window and door perimeters to the building substrate
- Joints in stucco insulation systems
- Sheet rock joints in roof assemblies
- Beneath metal cap flashings
- Full building coverage as an air/vapor barrier
- Sealing joints on gypsum sheathing in cavity wall construction
- Other areas where a water or air seal is required.

APPLICATION

PLEASE NOTE: There should be no solvent-based caulks used in conjunction with Protecto Wrap BT25XL. BT25XL should not be used in direct contact with the flexible (plasticized) polyvinyl chloride (PVC based membranes and products) i.e. flexible "J" channel.

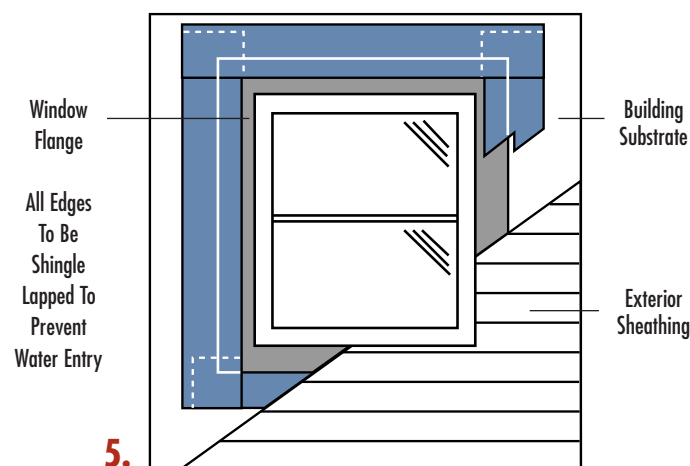
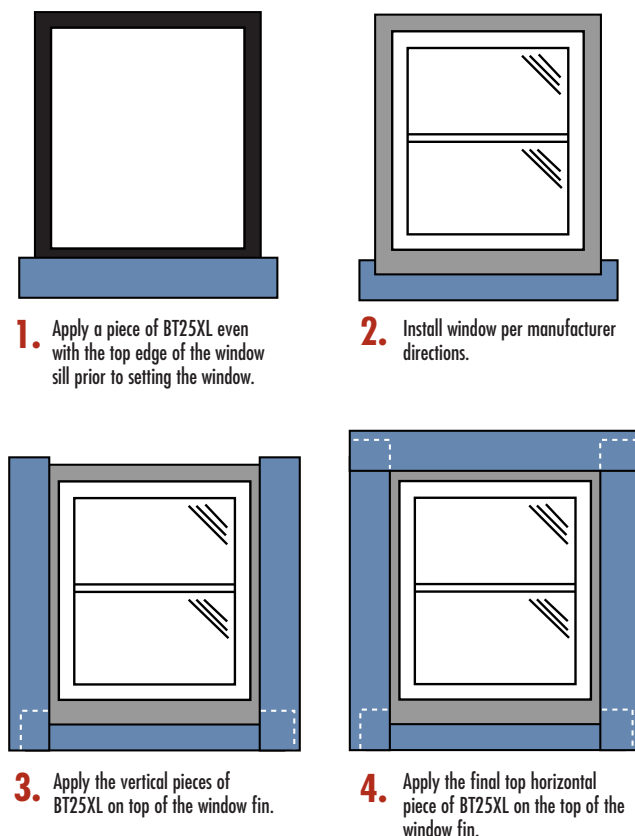
When applying BT25XL to masonry, concrete, black sheathing board and OSB products or Dens-Glass Gold*, the surface should be tested. If adequate adhesion is not obtained, the surface must be primed with Protecto Wrap BT-Primer or Protecto-Tak Spray Adhesive.

*Dens-Glass is a registered trademark of Georgia-Pacific Corporation

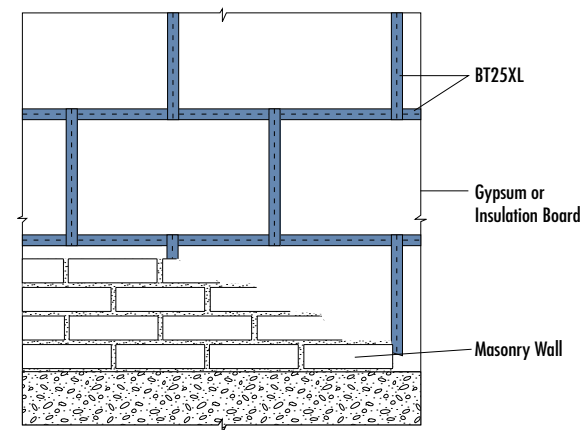
Surfaces should be clean, dry, free of dirt and other foreign matter. For best results, BT25XL should be applied at a temperature above 25°F. When used as an air/vapor barrier system, all lap and butt joints must overlap a minimum of 4". Masonry ties should be placed on top of the BT25XL and sealed with Protecto Wrap's JS160H Mastic.

Cut a piece of BT25XL in a length that can be easily handled. Begin application by removing approximately 12 inches of the release paper and center the tape over the area being sealed. **Firmly roll** the BT25XL against the surface and continue pulling off the release paper while rolling the tape into place. Rolling the BT25XL is essential to gain 100% surface contact of the BT25XL adhesive to the substrate and will minimize trapping air beneath the tape. **Do not stretch BT25XL.** Lap building wrap material 4" on top of BT25XL and seal the building wrap to BT25XL.

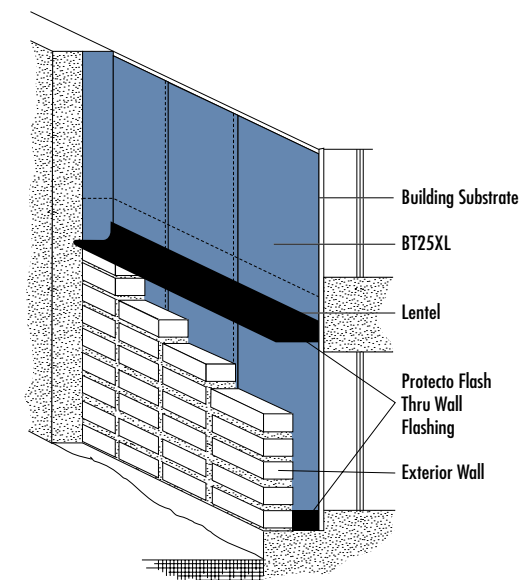
WINDOW APPLICATION



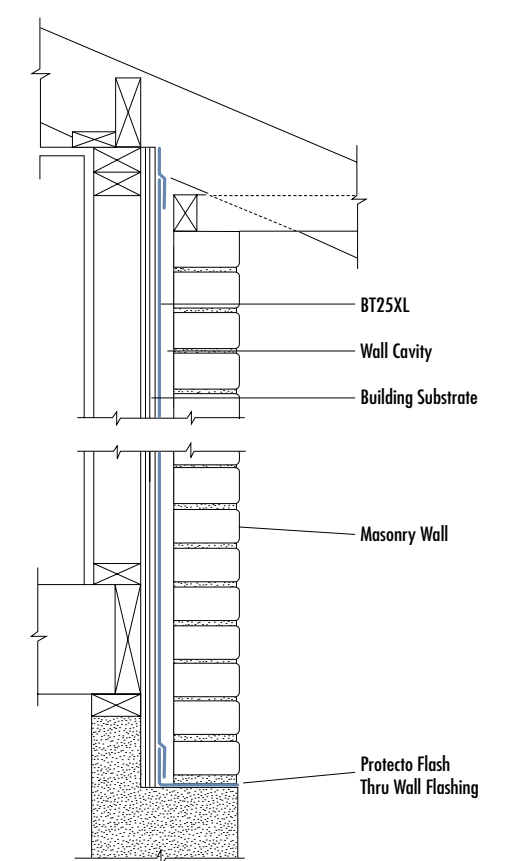
BT25XL as a Seam Sealing Tape



BT25XL for Cavity Wall Protection



BT25XL as a Thru-Wall Flashing



TESTING

BT25XL is the only flashing tape to pass hurricane level wind-driven rain testing. (ASTM E331-90, test method for water penetration of exterior windows.) Meets ASTM 2112. Meets or exceeds ICC Code Approval ESR1825.

PROPERTIES

Property	Value	Test Method
Color:	White	
Thickness:	25+ mils	
Tensile Strength:	975 psi	ASTM D412
Elongation:	over 500% (rubberized adhesive only)	ASTM D412
Moisture Vapor Transmission Rate:	0.01 perms max.	ASTM E96
Max. Exposure Time:	120 Days	

PRECAUTIONS

1. Rolling the BT25XL is essential to gain 100% surface contact of the BT25XL adhesive to the substrate and will minimize trapping air beneath the tape.
2. When Protecto Wrap's BT25XL is used as an air/vapor barrier, the dew point must be engineered to the exterior of the building.
3. Care should be taken not to leave the membrane exposed to direct sunlight for over 120 days.
4. Any caulking that contains solvents must not be used on or around the BT25XL membrane.
5. Do not stretch BT25XL. Stretching will adversely affect the adhesion of the product.
6. BT-Primer or Protecto-Tak Spray Adhesive must be used in applications with temperatures below 25°F (-4°C).
7. BT-Primer or Protecto-Tak Spray Adhesive must be used on weathered surfaces, masonry, concrete and Dens-Glass Gold*, black sheathing board and OSB.
8. Some chemicals used in the production of OSB may adversely affect the adhesion of BT25XL. BT-Primer or Protecto-Tak Spray Adhesive will enhance the adhesion of BT25XL to OSB.
9. BT25XL must be stored in a location with temperatures above 50°F (10°C).
10. Protecto Wrap's EIFS Tape is recommended if stucco is to be applied directly to the air/vapor barrier.



Premium Building Products
That Protect

TECHNICAL DATA

Properties	Test Method	Test Results
Color		White/Gray
Thickness		25 mils
Tensile Strength	ASTM D412	975 psi
Elongation (adhesive only)	ASTM D412	500%
Permeance	ASTM E96	0.01 perms max
Nail Sealability	ASTM D1970	Pass
Operating Temperature		45°F to 240°F (7°C to 116°C)

PACKAGING

Roll Widths: 4", 6", 9", 12", 18", 36"
Roll Length: 100 feet per roll

DESCRIPTION

BT25XL™ is a cold applied self-adhering membrane composed of a tough cross laminated High Density Polyethylene surface coated on one side with a layer of recycled butyl hybrid adhesive.

FEATURES

- Proprietary RECYCLED butyl hybrid adhesive
- 120 Day UV exposure rating
- Fully adhered system
- Seals around properly installed fasteners
- Compatible with and will adhere to most construction surfaces¹
- Forms a positive air/vapor barrier²

USES

Used as a complete waterproof self-adhered flashing for window and door installations to create a positive air/vapor barrier in everyday construction. Safe for use on most wood, wood clad, aluminum, fiberglass and vinyl windows and doors
Used as a full building wrap in envelope applications in cavity wall construction as an air/vapor barrier membrane.
Sealing around skylights
Sealing joints in exterior sheathing
Sealing penetrations in roof and wall systems

LIMITATIONS

Not recommended for use on windows or doors that incorporate a plasticized nailing flange or drip cap, consult window manufacturer to determine nailing flange type.
Not recommended for use over or near solvent based sealants. See Technical Letter Chemical Compatibility.
Not recommended for use over or in contact with PVC roof coverings.
Not recommended in high temperature applications to exceed 240°F (116°C).

SHELF LIFE

BT25XL maintains optimum initial adhesion to substrates when used within one year from the date of manufacture.

STORAGE

BT25XL should be stored in the original, unopened container at ambient temperatures between 40°F to 90°F (5°C to 32°C). Storage area should remain dry and out of direct sunlight. Do not remove materials from original containers until ready for use. Do not double stack pallets.

PREPARATION

All surfaces shall be clean, dry and free of any foreign materials. The surface shall be free of gaps, sharp edges and protrusions.

Metal surfaces may need to be solvent wiped and/or abraded to achieve optimum adhesion.

¹ Note: If surface is DensGlass Gold[®], OSB, Concrete block (CMU), masonry, fiber board sheathing or cannot be cleaned to a like new surface or the surface is damp or below 45°F (7°C), primer should be used prior to the application of the membrane. Some housewrap materials may require primer, test for adhesion prior to full application. Refer to: Technical Letter Primer Selection for more information.

Protecto Wrap Company recommends testing substrates for adhesion. If adhesion to substrate is found to be marginal, then a primer shall be used to ensure optimal adhesion. Refer to: Technical Letter Primer Recommendations; See Technical Letter, Adhesion to Substrates.

APPLICATION

Apply first piece of **BT25XL** to the rough opening sill; firmly roll into place using a hand roller (J-roller, Laminate roller) to smooth out any wrinkles, air bubbles or creases that would allow water to migrate behind the membrane. Set window into the rough opening and fasten per window manufacturer's instructions. Apply vertical pieces over the nailing flange at the sides of window frame, firmly roll into place using a hand roller to smooth out any wrinkles, air bubbles or creases, apply the final piece over the top nail flange and overlap the vertical sides pieces, firmly roll into place using a hand roller to smooth out any wrinkles, air bubbles or creases.

* Additional methods and details can be found at www.protectowrap.com or call (800) 759-9727.

CLEAN UP

Dispose of waste in accordance to local requirements. Control worksite so that boxes and release liner do not present a hazard.

Packaging materials and release liner can be recycled.

CAUTION

BT25XL should not come into contact with solvent based products, polysulfide's, plasticized PVC roofing materials or high concentrations of resins (pitch).

² Note: It is very important in full coverage envelope applications that the **BT25XL** is tightly sealed into the roofing and below grade waterproofing systems and perimeter flashings to retain the integrity of the vapor barrier throughout the entire structure. In full building envelope applications, the dew point of the wall assembly must be engineered to the exterior of the building.

LIMITED WARRANTY

This product is covered by the Protecto Wrap Standard 10 Year Limited Warranty.

PROTECTO WRAP COMPANY
1955 South Cherokee Street
Denver, CO 80223
(303) 777-3001 • (800) 759-9727
FAX (303) 777-9273
www.protectowrap.com